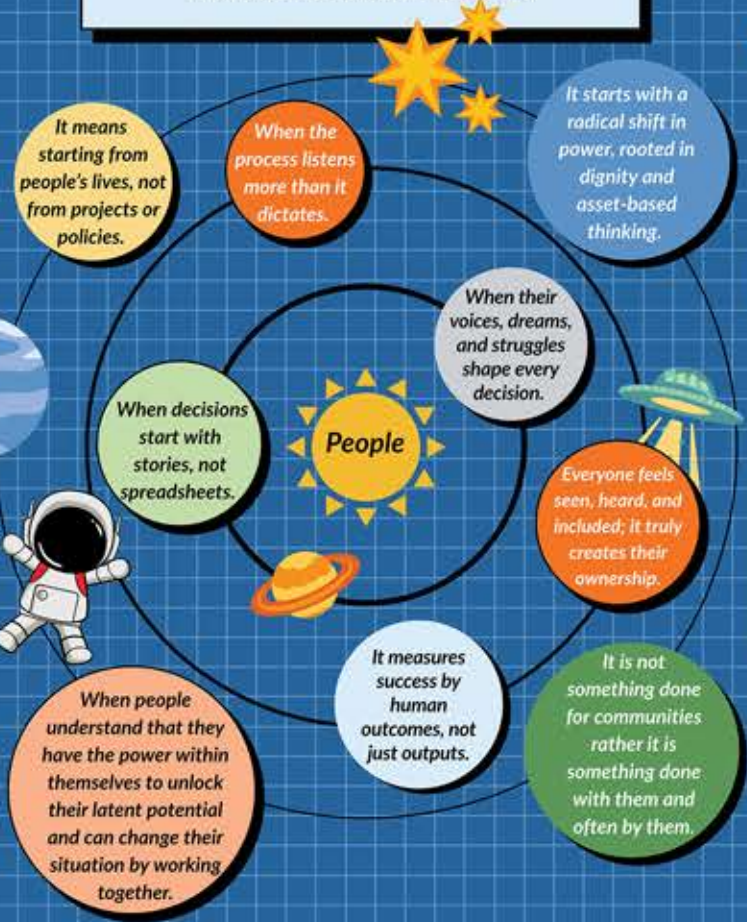


People-centric Development

What makes it truly about people?



Meaning of Collective Housing

It is where design, space and community intersect.

Making something meaningful together.

It is community unity, collective decision making and sharing of their own resources.

Coming together to solve problems, which benefit both human and non-human communities.

People's process which shows the power of collectiveness.

Collective Housing is the way to encourage people to have housing rights through participation as a group, not as individuals.

Where architecture meets empathy... people coming together to design not just homes, but shared futures.

Ideally, when a group of people willingly and collectively engage in the design, planning, finance, land security, construction, and management processes of housing, it can be termed collective housing. Any positive collective action by or with a group of to be residents in a habitation process can be a good start for collective housing.

Collective housing is more than just a place to live; it's a space where people come together, support each other, and feel like they truly belong. It's about sharing not only walls but also experiences, care, and trust, creating a small community where everyone looks out for one another.

- A shared premise, not only spatial sharing, it also about sharing of emotions, feelings of happiness or sadness.
- A pro-active, participatory and community-led manner of providing the basic human need for SHELTER.
- An intentional community-oriented spatial response to urban density that prioritizes shared activities & values, support, and affordability.

As an architect, I see collective housing as a way to empower the people, especially the poor to design, build, and manage their own homes and dignity.

People coming together to create shared living spaces that benefit everyone.

Housing done through the process requiring community participation as well as policy sectors collaboratively.

Community-led Development

In action, on the ground, or in the neighborhood



Superpowers of A Community Network

Trust
Solidarity &
Respect

- Mutual Support & Aid
- Problem Solving
- Local Wisdom
- Collective Knowledge
- Peer Learning
- Shared Experience
- Practical Resilience
- Collective Strength
- Power of Togetherness
- Unified Voice
- Power of Negotiation
- Open Communication
- Power of Decision Making
- Collaboration
- Shared Vision
- Collective Action
- Unity and Friendship
- Community Bonding
- Connection
- Conflict Navigation
- Access to Resources

Pictures of Participatory Tools



A Conversation on Citywide Planning

over a cup of tea or coffee

connecting all the small, hopeful dots across a city, one community, one idea, one voice at a time, until those dots form a bigger picture where everyone is visible and included.

Citywide Planning is when the whole city, not just the experts, takes part in shaping its future. Instead of one master plan made from the top, it's a collective map built from the ground up, connecting every neighborhood so no one is left behind.

designing the blueprint for how an entire city lives, moves, and grows.

Citywide planning is looking beyond one project or neighborhood.

A plan for people, with people.

It's about housing, roads, jobs, green spaces, transport, and people's everyday routines, and how everything should interconnect with each other.

Something constantly evolving and dependent on each community's specific geography and culture.

It's like designing a puzzle where all the pieces fit together. The key is listening to communities - people who actually live in these areas know what they need.

Stories of Saving for Change



Key Ingredients of Resilient Housing

Loaded with

- 1 People's Participation
- 2 Strong Community Bond
- 3 Flexible Design
- 4 Structural Strength
- 5 Local Wisdom
- 6 Adaptability
- 7 Technical Know-how
- 8 Disaster Preparedness
- 9 Sustainability
- 10 Financial Resources
- 11 Collective Process
- 12 Inclusive Planning
- 13 Learning by Doing
- 14 Trust and Belongingness
- 15 Empathy and Care

With a Dash of